

Prince George's County

CLEAN AND BEAUTIFUL




Vol. 2 Grades 3-5

Prince George's County

**CLEAN AND
BEAUTIFUL**

Vol. 2 Grades 3-5



My name is
Spencer the Sprout,
I'm on a mission to keep my
home, Prince George's County,
Maryland, clean and beautiful.
I want you to help me.

When we put
trash in its proper place,
animals that live on land and in
the water aren't exposed
to litter which can
harm them.

When it rains,
the wind can carry litter directly to
a nearby water body like a stream or
river or the wind can carry the litter
to a storm drain that empties
directly into the river.

This is why
we must put our trash
in its proper place
when we are
finished.

Let's help Spencer on his mission!

As you make your way through this workbook, you will complete activities and earn points. Track those points on your progress bar on page 17 to unlock new titles! Once you complete all 10 activities and earn 100 points, you can become a Master of Recycling!

All about the watershed...

What's a watershed?

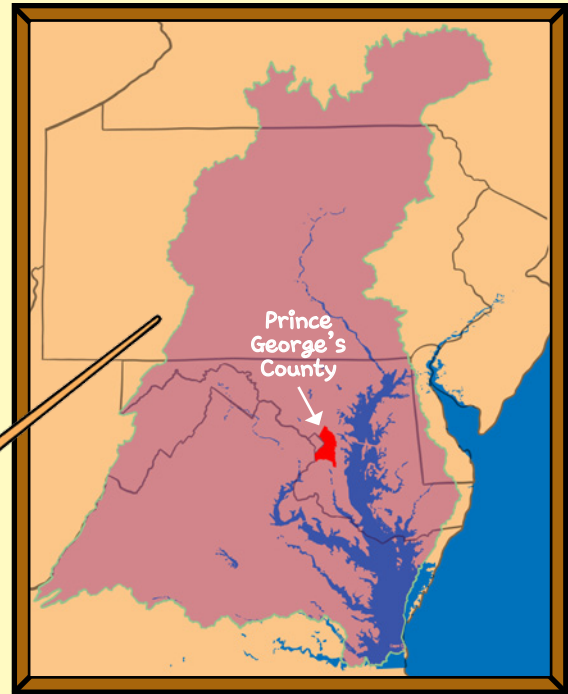
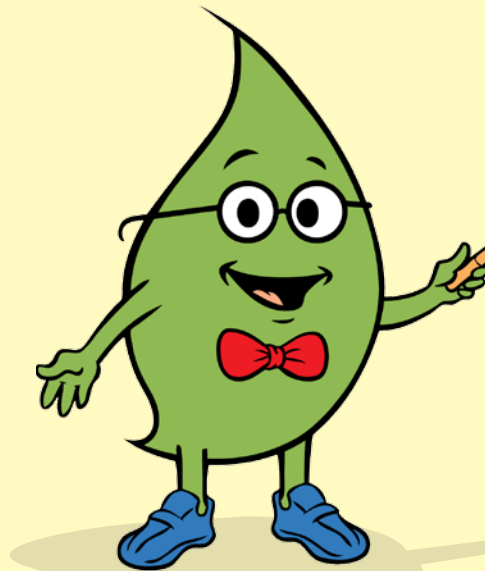
A watershed is the name for an area where all rainwater that falls will drain and collect at the same place, such as a river or bay. Prince George's County is a part of a gigantic watershed called the Chesapeake Bay Watershed. It's so big that it is made up of six states.

The watershed includes our home state, Maryland, as well as Pennsylvania, Delaware, New York, Virginia, West Virginia, and our neighbor the District of Columbia.

There are over 18 million people living in the bay watershed as well as millions of animals, insects, and fish that call the Chesapeake Bay Watershed home. That's a lot of people and what one person does in any part of the watershed can have an impact on people and nature.



With over
18 million people
living in the Chesapeake Bay
watershed it's hard to imagine
that one person can make
a difference.



However,
everyone has an impact on the
health of the watershed. When we
dispose of our trash properly, the
water will be clean and the animals
that live in and around the bay
will be healthy.

Activity 1: (5 points) It is important to Spencer that you learn about the
Chesapeake Bay Watershed.

Share with a friend one way you can help do your part to keep the Chesapeake Bay
healthy. Once you are done, add five points to your progress bar.

Essie Black the Eastern Box Turtle



When I was at school, I learned the story of Essie Black the Eastern Box Turtle. Essie Black lived in Allen Pond Park in Bowie, Maryland. Oh, how Essie loved to swim in the pond. She loved to see the children laughing, running, and playing at the park. Though she never got to close. She was afraid she might get stepped on.

Essie Black found food to eat all around the pond including fish, insects, and plants. One day while taking a swim, Essie thought she saw a fish swimming above her in the water. She quickly grabbed the fish.

Oh no!!! It was no fish at all! It was a plastic snack bag left behind on the playground by one of the children. It got swept up by the wind and the rain and eventually ended up in the pond where Essie lived. After Essie Black ate the plastic snack bag, she became very sick. She started feeling full all the time and began to lose her appetite.

There are stories like Essie's all around the world. When animals mistake pollution for food, it can cause them great danger that can lead to death.

Reading Comprehension

1. What types of food did Essie the Eastern Box Turtle eat? 5 points.
2. How did the plastic snack bag get into the pond? 5 points.
3. Change the story. What would you do differently? What should the children have done with the plastic bag when they were finished with it? 5 points.

Activity 2: (15 points) Poor Essie Black! Answer each question to help show Spencer that you will make sure that this does not happen to any other turtles. Each question is worth 5 more points to your progress bar!

Do you remember?

These animals, fish, and insects can be found in the Prince George's County portion of the Chesapeake Bay Watershed. Study these items and then turn the page for a memory challenge



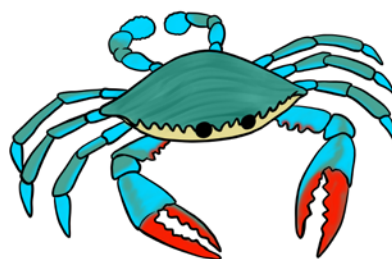
Monarch Butterfly



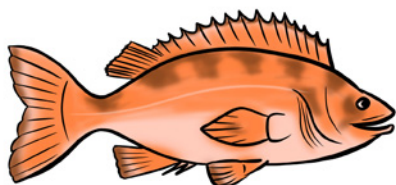
Terrapin Turtle



Baltimore Oriole



Maryland Blue Crab



Rockfish



Deer

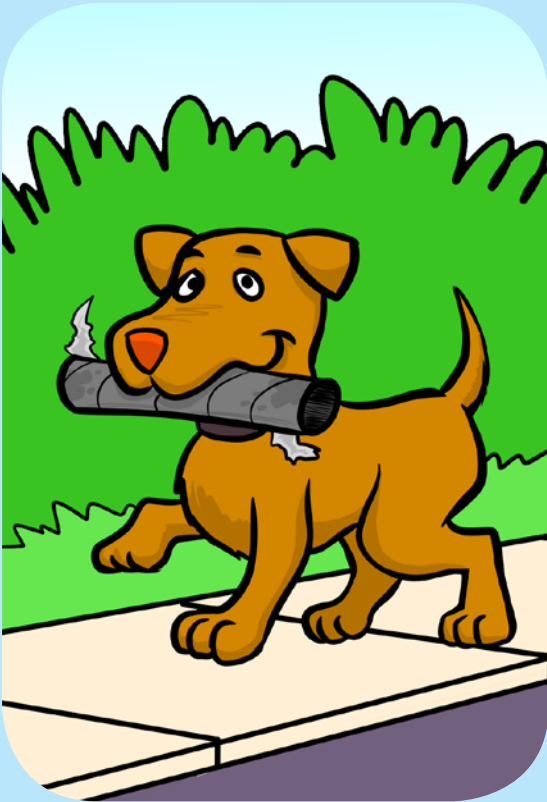
Activity 3: (12 points) Spencer is known to have a pretty good memory. How is yours? For every item you remember correctly add 2 points to your progress bar!



- _____ Red Robin
- _____ Dolphin
- _____ Monarch Butterfly
- _____ Fox
- _____ Terrapin Turtle
- _____ Deer
- _____ Catfish
- _____ Blue Jay
- _____ Rockfish
- _____ Lady Bug
- _____ Baltimore Oriole
- _____ German Shepherd
- _____ Maryland Blue Crab

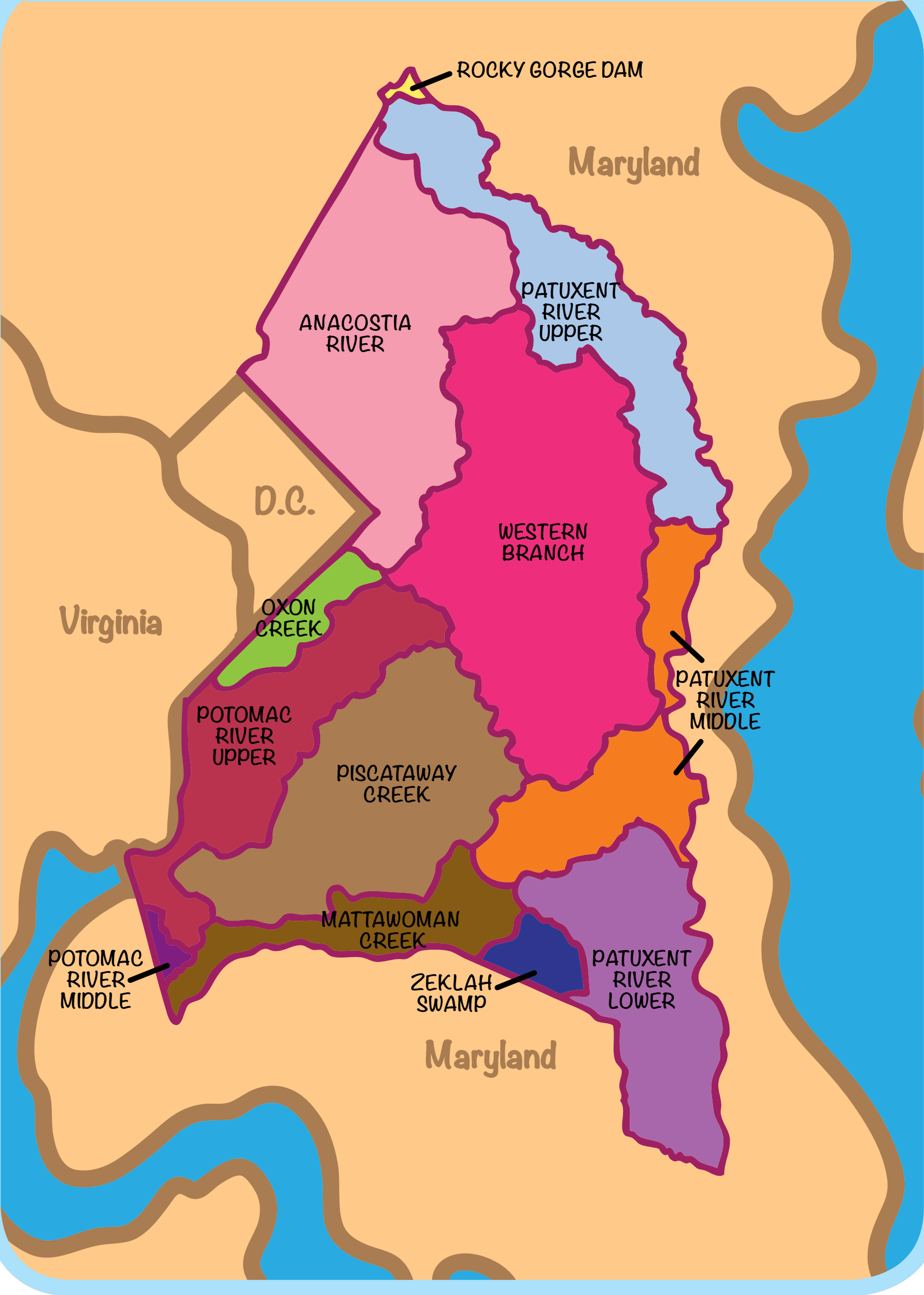
Activity 4: (5 points)
Animals are impacted by litter in many ways. Can you think of at least one for 5 more points on your progress bar?

Litter, litter everywhere
tossed on the ground, without a care
Oh no! The animals think it is a treat
but litter isn't food they should eat
Don't just walk by and stare
Pick up the litter, do your share
Dare to keep our streets clean and gorgeous
So, we'll continue to enjoy
the beauty of Prince George's!



Activity 5: (5 points) Wasn't that a nice poem that Spencer wrote? Read the poem to three people to help Spencer spread the word about picking up litter. Once you are done, add 5 points to your progress bar!

Let's take a look closer to home. This is Prince George's County which is also made up of smaller watersheds called sub-watersheds. Each subwatershed is shown in the map below.



Activity 6: (11 points) Impress Spencer by studying the map on pages 12-13 and correctly naming the watershed for the places below. Each watershed that you correctly name earns you points on your progress bar!



- 2 points - National Harbor
- 2 points - Your School
- 2 points - Bladensburg Waterfront Park
- 2 points - Watkins Regional Park
- 2 points - Camp Schmidt
- 1 point - Your Home

Fill in the Blanks

Activity 7: (10 points) You are doing great! Show off your recycling skills by placing all words correctly in the blanks. All words can only be used once. When you are done, mark off 10 more points on your progress bar.

Word Bank:

trash • reused • reduce • recycle •
neighborhood • litter
• plastic bottle • watershed

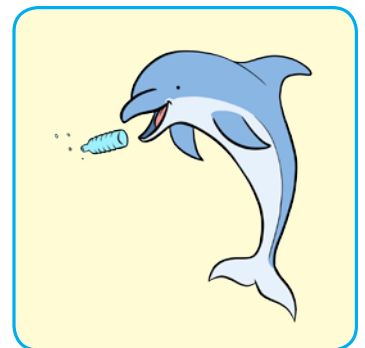
My brother Mike and I were walking home from school, when Mike noticed _____ on the ground near a small creek. It was a plastic water bottle and it made the _____ look bad. Mike picked up the bottle and put it in a recycling bin near our home.



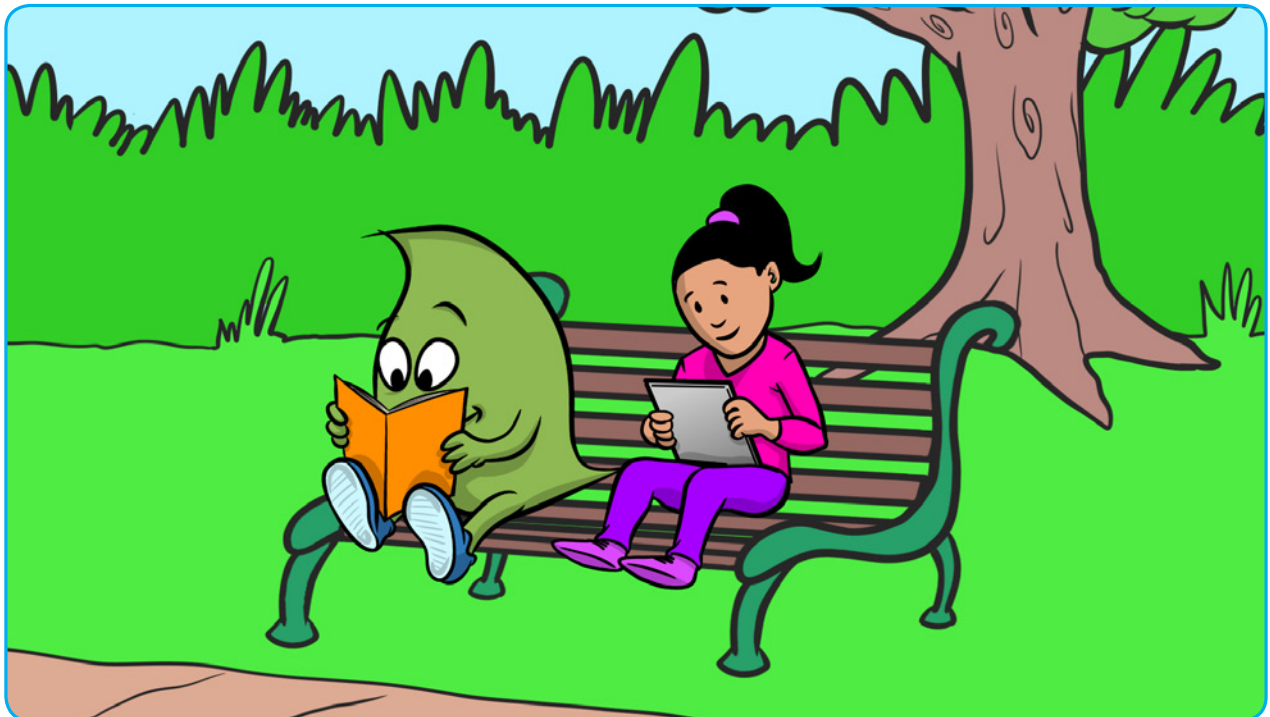
Imagine if plastic bottles were all over the ground in your neighborhood. People and animals wouldn't have anywhere to walk, and insects might get stuck in them. This _____ harms the environment because it just sits there if no one picks it up. It can also get swept away in the creek. If it gets swept away in the creek, the



animals may try to eat it and if it makes it to the ocean, this _____ can definitely get swallowed by a larger fish. Imagine having a plastic bottle in your tummy. Ouch!



That's why we have to keep our environment clean. We live in the Chesapeake Bay_____and all of the rivers, streams, and creeks flow to the Chesapeake Bay. It's where we get the delicious rockfish and blue crabs that we eat at my Grandpa's house on Saturdays. I want people to enjoy the good seafood we have in Maryland by keeping the streams and rivers clean right near our homes. If people start buying bottles that can be_____over and over again, it will_____the number of plastic bottles that may end up in the water. But if you do drink from a plastic bottle please don't throw it on the ground put it in the nearest_____bin so that it can transformed into something else. Who knows maybe one day we will enjoy sitting on a bench in the park made from the bottle you chose to pick up and dispose of properly.



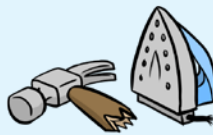
Do you know where your trash goes?

In Prince George's County, we can get rid of the things we no longer want and take care of the environment at the same time.

Activity 8: (16 points) Help show Spencer that you know where each item belongs. Draw a line to match the waste item with the place it goes. For each correct match, you earn 4 more points towards your progress bar!



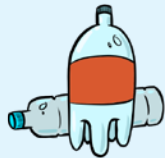
Prince George's County
Organics Composting Facility



2 points – Metal



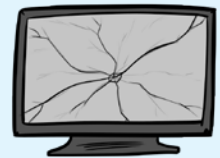
Material Recycling Facility



Plastic Bottles – 2 points



Food container – 2 points



Television – 2 points



Aluminum Cans – 2 points



Old Food – 2 points



Old Cell Phone – 2 points



Prince George's County
Electronics Acceptance Site



Pile of Leaves – 2 points



Brown Station
Sanitary Landfill

Activity 9: (15 points) Spencer would like to start off by seeing how much you already know about protecting the environment. Use the definitions to unscramble each word and start earning points towards your progress bar!

2 points MOSPTCO _____

Fertilizer that is made from plants or food that has decayed

2 points TNNORMVIEE _____

The land, air, and water, where people and animals live

2 points DWSATERHE _____

A place where all of the water that drains off the land end up

1 points LREITT _____

Trash that is left on the ground or in other open areas

3 points MAINRE BISDER _____

Trash that is in the ocean or sea

2 points UTIOLPNOL _____

Anything that can cause harm to the environment

1 points REECDU _____

To use less of something

1 points ESUER _____

To use something more than one time

1 points RELYCCE _____

To take something old and turn it into a new thing that can be used

Activity 10: (12 points) Congratulations! You have made it to the tenth and final activity! Each review question is worth 2 points. Complete all five to finish your last activity! Remember, to be a Master of Recycling, you must complete all activities AND earn 100 points! Show Spencer that you are ready to be a Master of Recycling!

2 points 1. What is a watershed?

2 points 2. Name three watersheds that are a part of Prince George's County.

2 points 3. List some of the animals that call the Chesapeake Bay Watershed home.

2 points 4. Why is it important to keep our communities clean by disposing of trash properly?

2 points 5. From the story about Essie Black, the Eastern Box Turtle, we learn one way that trash makes it into the water. Please explain how the trash got into the Pond.

2 points 6. What can you do to keep your neighborhood clean and beautiful?



MY PROGRESS BAR

Fill in your points from each activity
and add them all up to get your score!
(Answers on next page)



ACTIVITY 1
Total points ____

ACTIVITY 2
Total points ____

ACTIVITY 3
Total points ____

ACTIVITY 4
Total points ____

ACTIVITY 5
Total points ____

ACTIVITY 6
Total points ____

ACTIVITY 7
Total points ____

ACTIVITY 8
Total points ____

ACTIVITY 9
Total points ____

ACTIVITY 10
Total points ____

TOTAL points ____

SCORES

0-20 points:
Supporter

21-40 points:
Nature's Ally

41-60 points:
Defender of the Bay

61-80 points:
Watershed Hero

81-99:
Environmental Champion

ALL 100 points:
Master of Recycling

Were you able to earn more than 100 points?
Wow that is great! For each extra point,
place a star on your Master of Recycling card.
Congratulations!

ANSWERS

Activity 1 – Dispose of trash properly

Activity 2 – Essie Black the Eastern Box Turtle

1. Fish, insects, plants.
2. One of the Children left a snack bag on the playground.
3. The children should have thrown the snack bag in the trash

Activity 3 – Do You Remember?

Monarch Butterfly, Terrapin Turtle,
Baltimore Oriole, Maryland Blue Crab,
Rockfish, Deer

Activity 4 – Poem: Litter, Litter Everywhere

1. Animals can eat trash and get sick.

Activity 6 –

1. Potomac River Upper Watershed
2. Ask your teacher or parent
3. Anacostia River Watershed
4. Western Branch Watershed
5. Patuxent River Middle Watershed
6. Ask your teacher or parent

Activity 7 – Fill in the Blanks

1. trash
2. neighborhood
3. litter
4. plastic bottle
5. watershed
6. reused
7. reduce
8. recycle

Activity 8 –

Do you know where your trash goes?

Prince George's County Organics
Composting Facility: *Old food, Pile of
Leaves, Food Container*

Prince George's County Electronics
Acceptance Site: *Television, Old Cell Phone*

Material Recycling Facility: *Metal, Plastic
Bottles, Aluminum Cans*

Activity 9 – Unscramble

1. compost
2. environment
3. watershed
4. litter
5. marine debris
6. pollution
7. reduce
8. reuse
9. recycle

Activity 10 – Review

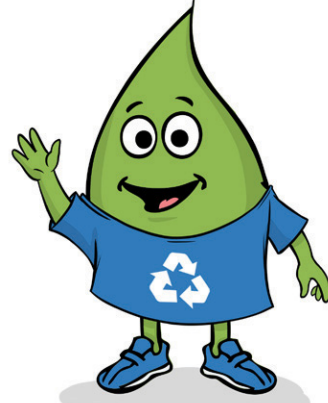
1. A watershed is the name for an area where all rainwater that falls will drain and collect at the same place, such as a river or bay.
2. Any 3 of the following: Anacostia River, Mattawoman Creek, Oxon Creek, Patuxent River middle, Patuxent River lower, Patuxent River upper, Piscataway Creek, Potomac River middle, Potomac River upper, Rocky Gorge Dam, Western Branch, Zekiah Swamp.
3. Answers will vary but think of animals you see outside, in your home, or that live in or near water
4. Answers will vary
5. The rain and wind carried it to the water after it was dropped by one of the children
6. Answers may vary but pick up litter and don't throw trash on the ground.

Supporter



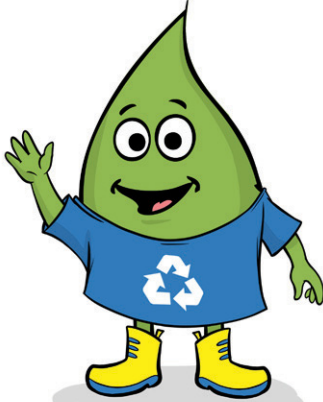
(0-20 pts)

Nature's Ally



(21-40 pts)

Defender of the Bay



(41-60 pts)

Watershed Hero



(61-80 pts)

Environmental Champion

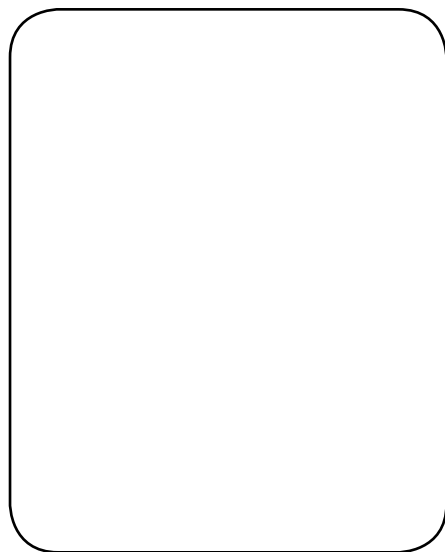
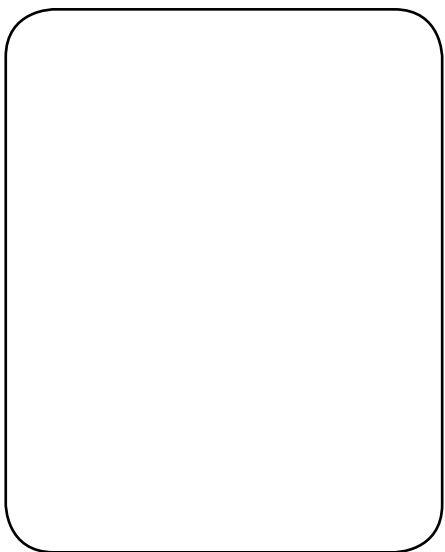
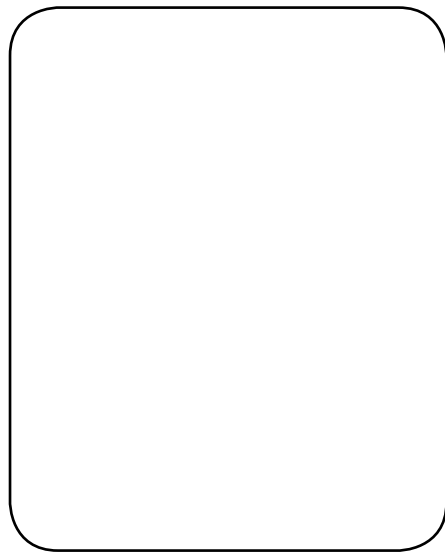
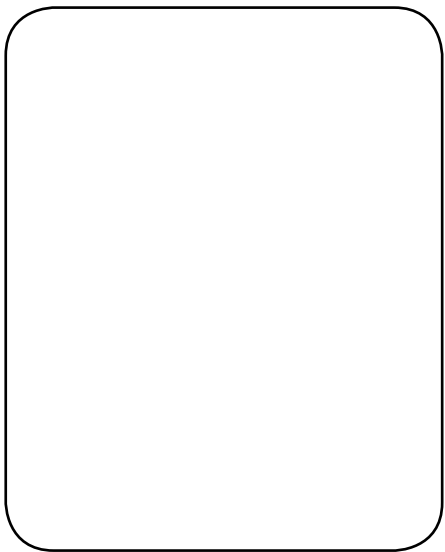
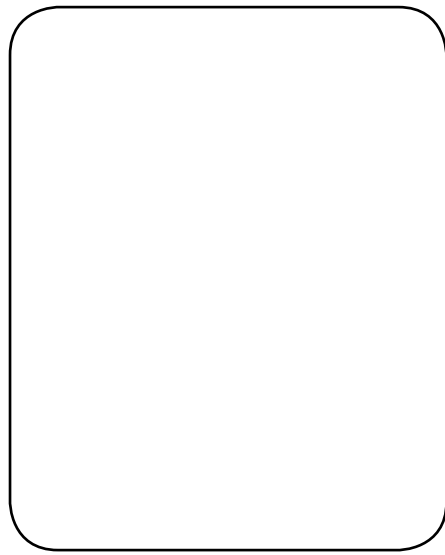
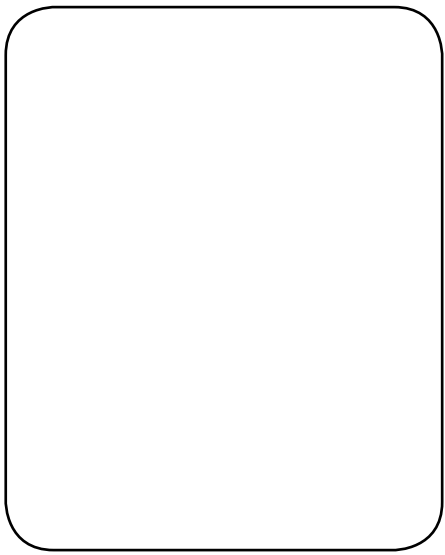


(81-99 pts)

Master of Recycling



(100 pts)



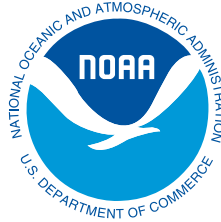
Prince George's County Clean and Beautiful



Sponsored by



In Partnership with



Consultants



and



Illustrator
Michael C. Lurry

©2020

